

**Antonio De Rossi / Roberta Giuliano /  
Paolo Albertino - plants**

## Chestnut Cabin

**Location:**  
Ostana, Italy

**Chronology:**  
2020

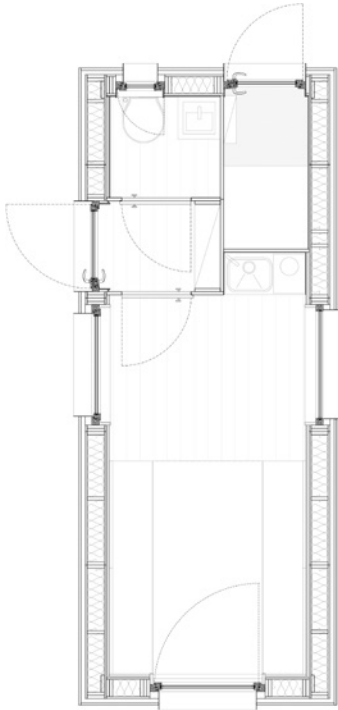
**Client:**  
Iris slr (PSR 2014-2020)

**Project category:**  
New construction

**Photos:**  
Laura Cantarella

Chestnut Cabin is a prefabricated and transportable housing module made entirely of local wood and self-sufficient in terms of energy and water.

The use of prefabricated panels with a wooden frame coming from a short supply chain, together with a system for the collection and treatment of rain water and greywater deriving from internal sinks, and a system for production and storage of renewable electricity, configure an artefact that explores the new theme of techno-rural.





**Fig. 1**  
Plan.

**Fig. 2**  
Window detail.

**Fig. 3**  
View from the  
exterior.

**Fig. 4**  
Internal view.

